

# CYLCHLYTHYR NEWSLETTER



May 2014



- 2014 Photo Competition
- Cups & Trophies

- Sale Entry Closing Dates
- P.L.R.B
- 2014 AGM Details

Photo by Dewi Ellis Flock 547

**The modern ewe for today's farmer**

# FLOCK BOOK & REGISTRY NEWS

## ewe lambs

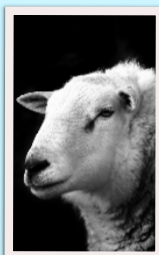


**Y**our 2014 Ewe Lamb registrations are now due!

Please note the registration fee for all ewe lambs born in 2014,

registered on or before 31<sup>st</sup> October 2014 remains at £1.50 + VAT each. For those registrations received in the office after this date the fee increases to £2.00 + VAT each. Therefore it is cheaper to get your ewe lamb registrations sent into the office online, by emailed spreadsheet or paper form before 1<sup>st</sup> November.

## rams



**T**here is a section on the form for naming your rams. This is optional. For all rams born in 2013,

please give them a name starting with C. So that is Charlie, Cargo and Centurion's.

*Some things to consider when selecting your rams:*

**Society Upset Price at the Sales**

All rams at the Society sales will be sold with an upset of 250gns,

i.e. no ram can be sold for less than 250gns

**Ram Inspection Workshops**

The Ram Inspector will undertake a workshop for clubs to help explain the criteria for inspection. Clubs are to organise these workshops directly with the inspector. The club will be liable for any expenses involved.

**Testicle Size**

Concerns have been raised about the small testicles of some rams at sale time. Please be aware of this.



**Don't forget you can now do all registrations online**



## CHAIRMAN'S WORDS



As we move from Spring and look forward to Summer, for many with lambing behind them, the days lengthening and grass growing, May is one of the best months of the year. There is new life all around us and the countryside looks in pristine condition.



As a very active Society we will soon be hitting the road, promoting our breed to a wider audience at the forthcoming NSA events (Scot Sheep, South Sheep, and Sheep 14 at Malvern) as well as Balmoral, Royal Highland & Royal Welsh Shows. These events are our shop window to show farmers the qualities that the Lleyn has to offer and hopefully persuade them to come to some of our Society Sales to buy. It's extremely important that we put on outstanding displays. Over the Winter Heather puts in a lot of time and effort designing the stands and the Society promotional material, sheep are also sourced for all the stands. The main theme of the display is to focus on showing how well the Lleyn produces cross bred lambs for the commercial sheep farmer.

This year we are holding a the National Lleyn Sheep Competition at The Livestock Event on the 3<sup>rd</sup> and 4<sup>th</sup> of July at the NEC Birmingham. This promises to be a showcase event for our breed as we are the first and only sheep breed to be putting on this activity at the Livestock Event. Again the theme is producing quality commercial cross bred lambs, with classes for a Lleyn ewe with two cross bred lambs, pen of 5 pure Lleyn shearling ewes and a class for the colleges to put forward a pen of 5 shearling ewes. The Judge is our Vice President Wynne Davies. A presentation will be given to explain the attributes of the Lleyn during the two days.

The 2014 Society's AGM will this year be held in Aberystwyth, at the end of October. There promises to be fantastic weekend for all, book early to avoid disappointment.

The Society Office is open weekday from 9am until 2pm and Gwenda can be contacted during those times. An updated telephone answering machine message will be left on when Gwenda is not in the office informing you when she will return. Please feel free to leave a message that will be dealt with on Gwenda's return or call back at the stated time.

Now six months into my Chairmanship I would like to take this opportunity to thank the Council members for there support and encouragement as well as Gwenda and Heather who work tirelessly for the Society.

Many Thanks to you all.

*David Knowles*  
*Chairman*





# PERFORMANCE RECORDED LLEYN BREEDERS

Performance Recorded Lleyen Breeders (PRLB) is a recently formed group of progressive sheep farmers covering the UK. The group has evolved from the Lleyen Sire Reference Group, which was established in the 1970's, to increase the profitability of Lleyen flocks by accelerating the rate of genetic gain through performance recording.

The new group has similar, but broader, aims and objectives:-

- \* To continue to use and promote performance recording as a tool to improve net margins.
- \* To invite all Lleyen breeders who are currently recording with Signet to join the new group.
- \* To encourage non recording flocks to consider recording.
- \* To encourage the movement of genetic material between flocks (rams, semen, embryos) to improve linkage and hence the accuracy of EBV's.
- \* To establish a recognised and respected link between Signet and recorded Lleyen breeders.
- \* To create a point of contact, and to provide help, advice and encouragement for all PRLB members, and particularly for any breeders considering recording or breeders simply keen to support performance recording.

The PRLB has a presence on the internet via:

Website: [performancerecordedlleyenbreedersgroup.wordpress.com](http://performancerecordedlleyenbreedersgroup.wordpress.com)

Facebook: **Performance Recorded Lleyen Breeders**

Twitter: **@RecordedLleyen**

For further details please contact the Chairman: Humphrey Mills on 01440 731763 or the Secretary Edward Collins on 01544 388438.

## Officials:

**Chairman:** Humphrey Mills (Essex) Flock 1429 Tel: **01440 730728**

**Vice Chairman:** Richard Evans (Norfolk) Flock 1547 Tel: **01953 717258**

**Treasurer:** George Cullimore (Somerset) Flock 1932 Tel: **01225 448757**

**Secretary:** Ed Collins (Herefordshire) Flock 981 Tel: **01544 388438**

## Committee:

### **Scotland**

Neil & Debbie McGowan (Perthshire) Flock 894 Tel: **01828 633652**

### **N England**

Duncan Nelless (Northumberland) Flock 884 Tel: **01665 570629**

### **Midlands**

Simon Thompson (Derbyshire) Flock 1448 Tel: **01335 361322**

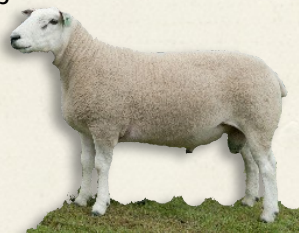
Wallace McCurdie (Warwickshire) Flock 930 Tel: **01926 63339**

Marcus Bullock (Worcestershire) Flock 619 Tel: **01299 896851**

Bill Evans (Worcestershire) Flock 10 Tel: **01886 821431**

### **S England**

Dominic Klinkenberg (Sussex) Flock 2259 Tel: **07884344294**



# 2014 PHOTO COMPETITION



Entry Closing  
Date Wednesday  
1<sup>st</sup> October

Sponsored by

## Classes

- Class 1 Lleyn Ewe(s) with Pure Bred Twins
- Class 2 Lleyn Ewe(s) with Crossbred Twins
- Class 3 A large flock of Lleyn
- Class 4 Lleyn doing what they do best
- Class 5 Lleyn or Lleyn cross finishing/finished lambs
- Class 6 Lleyn - anything goes!
- Class 7 A photo of Lleyn ewe(s) with lambs taken by someone 16 years of age or under. (You must be no older than 16 on 24<sup>th</sup> October 2014. You must be connected to a Society flock, e.g. your parents. You must send your age, DOB and connected flock number with your entry)

## Guidelines

1. Photos should be advantageous in the promotion of the Lleyn
2. The Lleyn Sheep Society reserves the right to use any of the photographs entered into the competition for future publicity material including the Society website
3. If you are submitting images of sheep which do not belong to you, please ask permission from the owner before entering. Please also make sure that the owner is identified on the entry i.e. in the file name.
4. The prizes will be won by the entrant.
5. Please do not enter photographs which have been entered in previous years.

Prizes  
Champion £??  
Reserve £??

Please send your entries in by email or disc. Please ensure that the class number is saved in the title. Please ensure the disc or email is clearly marked with your name and flock number. Additional information e.g. crossbred info etc can be included in the email or enclosed on a piece of paper with the disc.

All entries will be displayed at the Society AGM Weekend.  
Please send your entries to: [promotions@lleynsheep.com](mailto:promotions@lleynsheep.com)  
Or Heather Stoney, 2 Whiterow Cottages, Greenhow, Harrogate HG3 5JQ



# High Profile Advert

As a member of the Society, you are invited to advertise with the Society in the Farmers Guardian Sheep Supplement printed inside the main paper in early August. Members adverts are inserted into the Society advert to help make an overall larger advert with more impact for you and the breed.

As a breeder you may want to advertise your flock or as a club you may want to advertise your Open Day or other event. Advertising with the Society will work out cheaper than booking a stand alone advert.

If you would like to book an advert please contact me on 079666 99930 or email [promotions@lleynsheep.com](mailto:promotions@lleynsheep.com) by Monday 2<sup>nd</sup> June.

**PRICE LIST**

Single Advert  
£60 + VAT

Double Advert  
£120 + VAT

Members flock  
adverts & club event  
adverts only



2014 Society Handbook out now. All members should have received one in the post.

## EMAIL

Get to know things quicker!  
Much more information can be sent out from the Society by email. Does the office have your correct email address. Please email [office@lleynsheep.com](mailto:office@lleynsheep.com) to add or amend. Please do not forget to include your Society flock number

## International Enquiries

The Society gets enquiries from international people throughout the year. Very often they want to contact breeders about exporting sheep.

If you are happy for your contact details to be passed on to this type of enquiry, please email [promotions@lleynsheep.com](mailto:promotions@lleynsheep.com) with your name, flock number and preferred contact details

# RAM INSPECTION DATES

| Venue                               | Date/of Inspection  | Closing Date     |
|-------------------------------------|---------------------|------------------|
| R & S Evans' Farm (1547) NR16 2SD   | Saturday 14th June  | Friday 30th May  |
| Carmarthen Market                   | Wednesday 18th June | Friday 30th May  |
| Ross on Wye Market                  | Thursday 19th June  | Friday 30th May  |
| Exeter Market                       | Friday 20th June    | Friday 30th May  |
| M.H. Miller's Farm (1141) DT11 0BU  | Friday 20th June    | Friday 30th May  |
| Isle of Wight                       | Friday 20th June    | Friday 30th May  |
| D Bond's Farm (266) PO20 1LF        | Saturday 21st June  | Friday 30th May  |
| Hadlow College, Faulkners Farm      | Saturday 21st June  | Friday 30th May  |
| Carlisle Market                     | Wednesday 25th June | Friday 6th June  |
| Kendal Market                       | Wednesday 25th June | Friday 6th June  |
| Skipton Market                      | Thursday 26th June  | Friday 6th June  |
| Selby Market                        | Friday 27th June    | Friday 6th June  |
| N.I. - C & A Kennedy's Farm (1618)  | Saturday 28th June  | Friday 6th June  |
| Ruthin Market                       | Sunday 29th June    | Friday 6th June  |
| Dolgellau Market                    | Tuesday 1st July    | Friday 13th June |
| Welshpool Market                    | Wednesday 2nd July  | Friday 13th June |
| Newark Market                       | Saturday 5th July   | Friday 13th June |
| H.L. Nelless' Farm (884) NE65 8RG   | Monday 7th July     | Friday 13th June |
| Bryncir Market                      | Thursday 10th July  | Friday 13th June |
| Eire - Alan McDonald's Farm (1852)  | Saturday 12th July  | Friday 13th June |
| Norman Lawrence's Fm (333) AB41 8XN | Sunday 27th July    | Friday 11th July |
| Orkney                              | Monday 28th July    | Friday 11th July |
| Stirling Market                     | Tuesday 29th July   | Friday 11th July |
| Lockerbie Market                    | Thursday 31st July  | Friday 11th July |
| Isle of Man - D Kermeen's Fm (2078) | Thursday 31st July  | Friday 11th July |

All these dates are subject to change. If there is a low uptake on any particular venue that venue maybe cancelled, the breeder will be notified and asked to take their rams to the next available centre



# SALE ENTRY CLOSING DATES



| Sale                  | Sale date                | Entry Closing Date      |
|-----------------------|--------------------------|-------------------------|
| Exeter                | Thursday 28th August     | Wednesday 30th July     |
| Ruthin                | Monday 1st September     | Wednesday 30th July     |
| Ross on Wye           | Thursday 4th September   | Wednesday 30th July     |
| Roscrea (SI)          | Saturday 6th September   | Wednesday 30th July     |
| Stirling              | Monday 8th September     | Wednesday 13th August   |
| Thainstone            | Wednesday 10th September | Wednesday 13th August   |
| Carmarthen            | Thursday 11th September  | Wednesday 13th August   |
| Ballymena             | Saturday 13th September  | Wednesday 13th August   |
| Roscommon             | Saturday 20th September  | Wednesday 20th August   |
| Bakewell              | Saturday 20th September  | Wednesday 20th August   |
| Builth Wells Ram Sale | Monday 22nd September    | Wednesday 30th July     |
| Carlisle              | Thursday 25th September  | Wednesday 27th August   |
| Welshpool             | Saturday 27th September  | Wednesday 27th August   |
| Skipton               | Thursday 2nd October     | Wednesday 3rd September |

All these dates are subject to change. Should a date need to be changed, it will be noted on the Society website



## Membership Fee

**Have you paid your 2014 Membership Fee. If not, it is now overdue. If the office has not received this fee, you will not be able to register ewe lambs or rams and you will not be able to enter sheep in Society Sales until it is fully paid**



# BREED DEVELOPMENT UPDATE



## Flock Performance Measuring & Recording - a tool!

The Council has discussed how performance measuring and recording is being and can be used for the benefit of the Lleyn. There are many successful profiles of breeders who record as well as several outcomes not quite so positive. The Breed Development Committee has been tasked with moving this work forward to ensure you as breeders are getting the most from this tool.

The Breed Development Committee wants to highlight to breeders that recording and measuring is a useful tool which can work well alongside day to day selection. It must be used hand in hand with the eye, because if a sheep does not look like a Lleyn - it is not a Lleyn. If it does not have the maternal traits that makes the Lleyn what it is - what is it?

In the next Breed Development Meeting the committee will look at the following two points:

1. Key maternal traits breeders need to measure.
2. How these traits could best be measured (e.g. 100-day lamb: ewe weight ratio, 6 or 8 week weights, ease of lambing etc).

As breeders it can be all very daunting and confusing, hence the Society wants to help you get a better understanding. At the end of the day we all want the best for our breed and our individual flocks.

Anyone who has any points they would like to make on this subject which could be forwarded on to the BD Committee, please contact the Committee Chairman, Wallace McCurdie or Breed Development Officer Heather Stoney



[www.lleynsheep.com](http://www.lleynsheep.com)



LLEYN SHEEP SOCIETY

*distilling every  
successful ewe into  
hard working ewes!*

The Society website has had a spring clean and refresh, please do take a look

# 2014 SOCIETY AGM

## Aberystwyth Beckons You!

A famous Welsh welcome awaits you at the Marine Hotel, Aberystwyth, for the 43rd Annual General Meeting.

Come and join us - where business meets pleasure! You will deserve a short break at the end of a busy season and before the winter.



The Marine Hotel is situated in the centre of the promenade with breathtaking views of Cardigan Bay. A full weekend is arranged to satisfy a wide variety of interests including a Llyn flock visit. A memorable trip to Devil's Bridge on the famous Vale of Rheidol narrow gauge steam railway with the

opportunity to soak up the naturally beautiful scenery surrounding you. A short break at one of the most picturesque small towns in Wales. Also a visit to a renowned Welsh Cob Stud. Some of you might take the opportunity for a leisurely stroll along the sea front or a shopping experience in the town centre



(5 minutes from the hotel). There is something for everyone.

Watch out for full details on the Society website and future Society Newsletters. Details of accommodation are over the page. The dinner booking form is online.

Photo supplied by Welsh Cob & Pony Society

*The details in this advert may be subject to change*

# AGM BOOKING DETAILS

**Accommodation** - Please book direct with the hotel

**The Marine Hotel, Aberystwyth, SY23 2BX Telephone 01970 612444**

*The following rates apply until 22<sup>nd</sup>*

*September, please state that you are with the Llein Sheep Society AGM:*

| Room         | 1 night | 2 night |
|--------------|---------|---------|
| Double B & B | £95     | £160    |
| Single B & B | £65     | £120    |

## **Dinner - Saturday Night**

To book for the dinner, there is a booking form available on the Society website. Please print off and send with payment to Heather before 29<sup>th</sup> September. The form shows you the menu options. Alternatively a full booking form will be sent with the August newsletter.

## **Other Activities**

Details of booking for the other weekends activities including the steam train ride in the Vale of Rheidol, the trip to a Welsh Cob Stud and the visit to Lliest Wen Llein flock will be available online and in the August Newsletter.

## CUPS & TROPHIES

Open to all members. These are the Society cups and trophies available to be won in 2014:

The following two cups will be awarded at the Society's AGM in October:

### **The H.E. Roberts Cup**

For points won at the Nefyn, North Wales (Caernarfon) and Angelsey Shows

### **The Noel Baseley Memorial Show Points Cup**

For points gained at either one of the Royal and two County Shows or two Royals and one County

### **The Gwilym Williams Perpetual Memorial Trophy**

Is presented to the exhibitor gaining the highest number of points in the Llein section at the Royal Welsh Show. It is awarded at the Reception held on the Society stand after the judging.





## 2014 Diary

### May

Thursday 8<sup>th</sup> - N.S.A. Breed Forum, Builth Wells

Wednesday 14<sup>th</sup> - Friday 16<sup>th</sup> - Balmoral Show

Saturday 31<sup>st</sup> - Council Meeting

TBC - Breed Development Committee Meeting

### June

Wednesday 4<sup>th</sup> - N.S.A. Scot Sheep

Thursday 19<sup>th</sup> - Sunday 22<sup>nd</sup> - Royal Highland Show

Saturday 28<sup>th</sup> - N.S.A. South Sheep

### July

Wednesday 2<sup>nd</sup> - Thursday 3<sup>rd</sup> - Livestock Event & National Lleyn Sheep Competition

Tuesday 8<sup>th</sup> - Great Yorkshire Show

Monday 21<sup>st</sup> - Thursday 24<sup>th</sup> - Royal Welsh Show

Wednesday 30<sup>th</sup> - N.S.A. Sheep - Malvern

### August

Thursday 28<sup>th</sup> - Exeter Sale

### September

Monday 1<sup>st</sup> - Ruthin Sale

Thursday 4<sup>th</sup> - Ross on Wye Sale

Saturday 6<sup>th</sup> - Roscrea Sale

Monday 8<sup>th</sup> - Stirling Sale

Wednesday 10<sup>th</sup> - Thainstone Sale

Thursday 11<sup>th</sup> - Carmarthen Sale

Saturday 13<sup>th</sup> - Ballymena Sale

Saturday 20<sup>th</sup> - Bakewell Sale

Saturday 20<sup>th</sup> - Roscommon Sale

Monday 22<sup>nd</sup> - Builth Wells N.S.A. Ram Sale

Thursday 22<sup>nd</sup> - Carlisle Sale

Saturday 27<sup>th</sup> - Welshpool Sale

### October

Thursday 2<sup>nd</sup> Skipton Sale

Sunday 5<sup>th</sup> - Promotions Committee Meeting (TBC)

Saturday 25<sup>th</sup> - Sunday 26<sup>th</sup> - A.G.A. Weekend

Friday 31<sup>st</sup> October - Last day ewe lamb registration  
£1.50 + VAT each

### November

TBC - Breed Development Committee Meeting

### December

TBC - Promotions Committee Meeting

Wednesday 31<sup>st</sup> - Last Day to register 2014 ewe lambs

## Society Contacts

### Llywydd/President

Nia Williams

01248 852113

### Is-Lywydd/Vice President

Wynne Davies

01758 720684

### Cadeirydd/Chairman

David Knowles

01539 728999

### Is-Gadeirydd/Vice Chairman

Ifor Jones

01492 680223

### Treasurer

Dai Morris

### Gwe Feistr/Web Master

David Knowles

01539 728999

David@cragglleyns.co.uk

### Council Members

Gill Adams

David Alexander

Ivan Belton

Adam Cheesmur

Rhys Davies

John Dugdale

Adrian Fitzsimons

John Geldard

Arfon Hughes

Adam Kelly

David Knowles

Wallace McCurdie

Dai Morris

Daniel Rowbottom

David Stacey

Derek Steen

Llew Thomas

Meurig Williams

### Ysgrifenyddes/Secretary

Gwenda Roberts

Gwyndy, Bryncroes, Sarn,

Pwllheli, Gwynedd LL53 8ET

01758 730366 or 079666 99931

office@lleynsheep.com

### Swyddog Hyrwyddo a Datblygu/ Promotions & Breed Development Officer

Heather Stoney

2 Whiterow Cottages, Greenhow,  
Pateley Bridge, Harrogate HG3 5JQ

079666 99930 or 01423 712820

promotions@lleynsheep.com